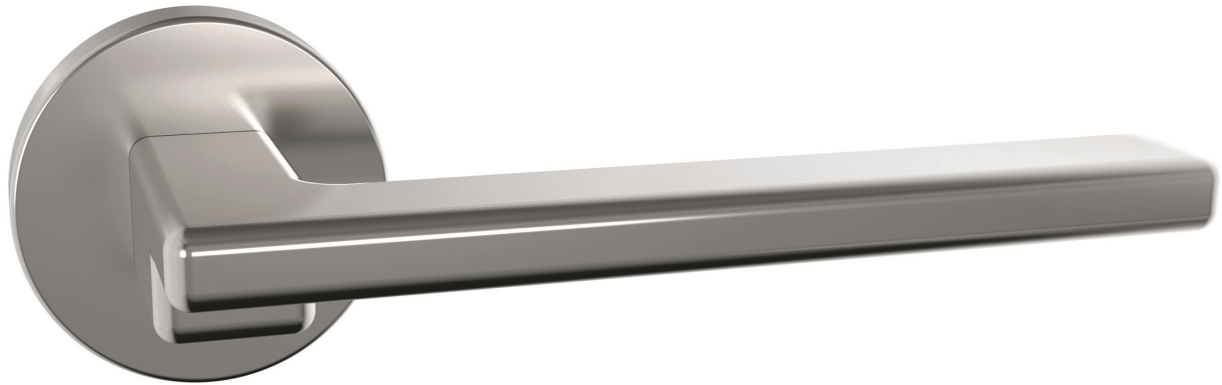


6237 | Amara

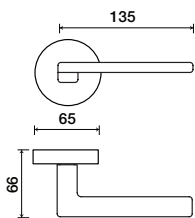
LEVERS



Shown in Satin Stainless Finish

Standard rose system

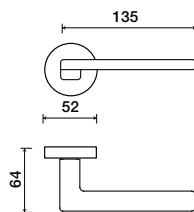
Lever with 65 mm rose for standard tubular 2-1/8" door prep



See "Rose Options" page for available rose options

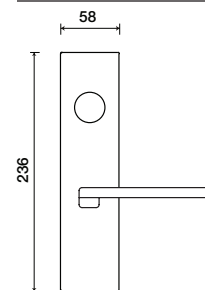
Small rose system

Lever with 52 mm rose for mortise and custom tubular door prep



Escutcheon plate system

Lever with plate for mortise functions



See "Escutcheon Plate Options" page for available plate options

Tubular leversets ordering example:

Amara lever on a 52mm small round rose, passage function, in satin stainless finish, with 2-3/4" backse

| 6237 | SM | PA | 630 | 2-3/4 | |
|--------------|--|--|---------------------------|------------------|-------|
| Lever design | Rose/Plate | Function | Finish | Backset | Misc. |
| Amara 6237 | 1912 (65 mm) 1912Q (65 mm) SM (52 mm) SMQ (54 mm) | PA (Passage) PY (Privacy) FD (Full Dummy) SD (Single Dummy) | Per project specification | 2-3/8" 2-3/4" | |