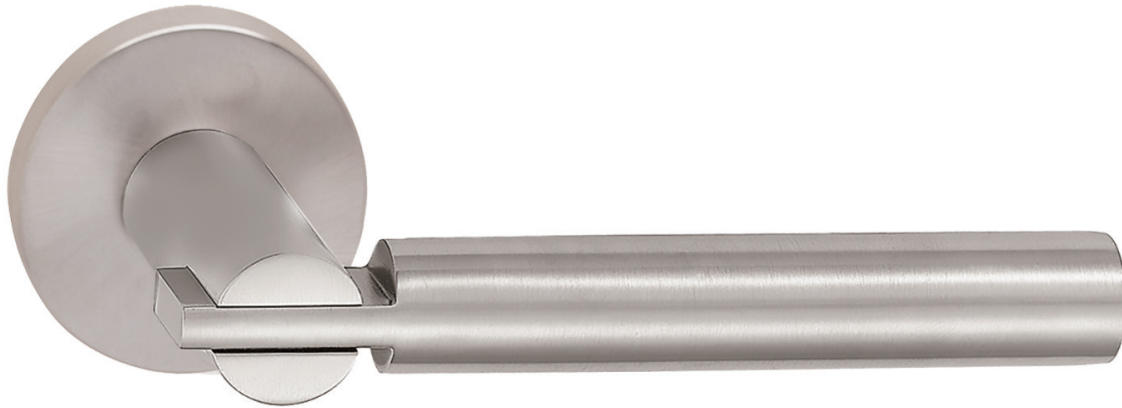


6491 | Rosa

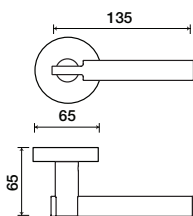
LEVERS



Shown in Satin Stainless Finish

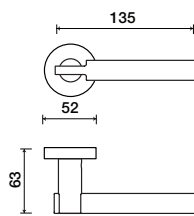
Standard rose system

Lever with 65 mm rose for standard tubular 2-1/8" door prep



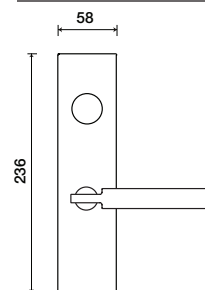
Small rose system

Lever with 52 mm rose for mortise and custom tubular door prep



Escutcheon plate system

Lever with plate for mortise functions



See "Escutcheon Plate Options" page for available plate options

See "Rose Options" page for available rose options

Tubular leversets ordering example:

Rosa lever on a 1912 standard round rose, passage function, in satin stainless steel finish, with 2-3/4" backset

6491	1912	PA	630	2-3/4"	
Lever design	Rose/Plate	Function	Finish	Backset	Misc.
Rosa 6491	1912 (65 mm) 1912Q (65 mm) SM (52 mm) SMQ (54 mm)	PA (Passage) PY (Privacy) FD (Full Dummy) SD (Single Dummy)	Per project specification	2-3/8" 2-3/4"	