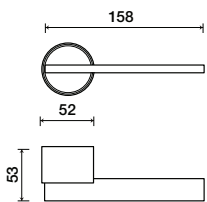


# 1230 | Solaris



Shown in Satin Stainless Steel Finish



## Integrated rose system

The 1230 Solaris lever introduces a new, contemporary concept for lever set trim in which the lever and rose design converge together to provide a unique, integrated trim system.

The round cylinder-shaped rose collar encases the round lever face and the flat bar lever grip which rotate together when the lever is depressed.

The Solaris is only compatible with M500 Mortise Lock systems and T700 Tubular Passage Latch sets. Tubular privacy function applications require the use of a privacy bolt (PB70).

### Mortise lock ordering example:

Solaris lever, privacy function, in satin stainless steel finish, with handicap-accessible turnknob and emergency coin release

1230	M526	630	RHR	R71	EMT
Lever design	Function	Finish	Backset/Handing	Option	Option
Solaris 1230 with integrated rose	Refer to <b>M500</b> Function chart	Per project specification	<b>RH</b> <b>RHR</b> <b>LH</b> <b>LHR</b>	Refer to <b>M500</b> option designations	Refer to <b>M500</b> option designations