



# 6502 | Brio

LEVERS



Lever returns to within 1/2" of door face  
\*Grip is an oval shape

Shown in Satin Stainless Finish

### Standard rose system

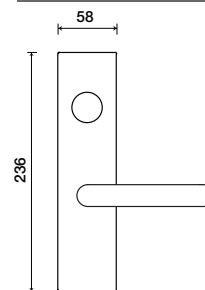
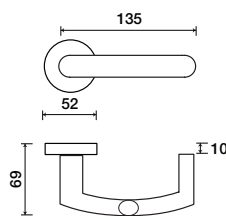
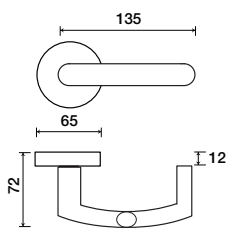
Lever with 65 mm rose for standard tubular 2-1/8" door prep

### Small rose system

Lever with 52 mm rose for mortise and custom tubular door prep

### Escutcheon plate system

Lever with plate for mortise functions



See "Escutcheon Plate Options" page for available plate options

See "Rose Options" page for available rose options

### Tubular leversets ordering example:

Brio lever on a 1912 standard round rose, passage function, in satin stainless steel finish, with 2-3/4" backset

| 6502         | 1912   | PA   | 630                       | 2-3/4            |       |
|--------------|--|--|---------------------------|------------------|-------|
| Lever design | Rose/Plate   | Function   | Finish                    | Backset          | Misc. |
| Brio 6502    | 1912 (65 mm)<br>1912Q (65 mm)<br>SM (52 mm)<br>SMQ (54 mm) | PA (Passage)<br>PY (Privacy)<br>FD (Full Dummy)<br>SD (Single Dummy) | Per project specification | 2-3/8"<br>2-3/4" |       |