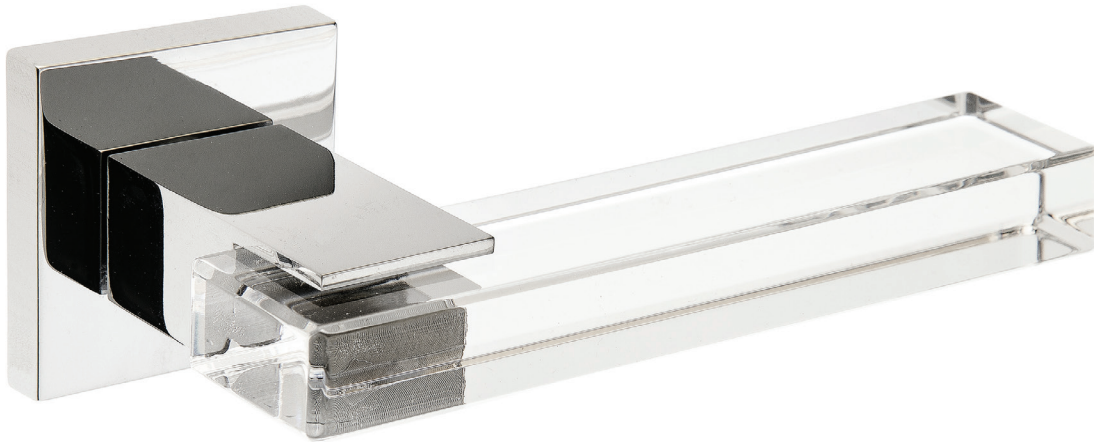




# 925 | Join

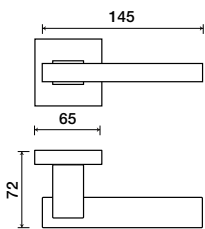


Matching item available:  
• DPC4021 Join pull

Shown in Clear /Polished Chrome Finish (Grip is machined acrylic)  
Other color combinations available

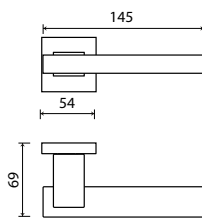
## Standard rose system

Lever with 65 mm square rose for standard tubular 2-1/8" door prep



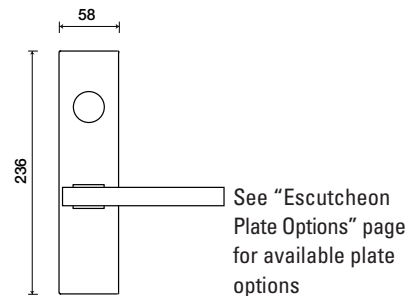
## Small rose system

Lever with 54 mm square rose for mortise and custom tubular door prep



## Escutcheon plate system

Lever with plate for mortise functions



See "Rose Options" page for available rose options  
(Tubular privacy application requires use of PB70 privacy bolt)

### Tubular leversets ordering example:

Join lever on a small square rose, passage function, in Clear/Polished chrome with 2-3/4" backset

925	SMQ	PA	Clear/625	2-3/4"	
Lever design	Rose/Plate	Function	Finish	Backset	Misc.
Join 925	SMQ (54mm) SMQR (54mm) SM (52mm) 1912Q (65mm) 1912 (65mm)	PA (Passage) FD (Full Dummy) SD (Single Dummy)	Per project specification	2-3/8" 2-3/4"	