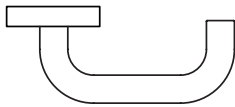
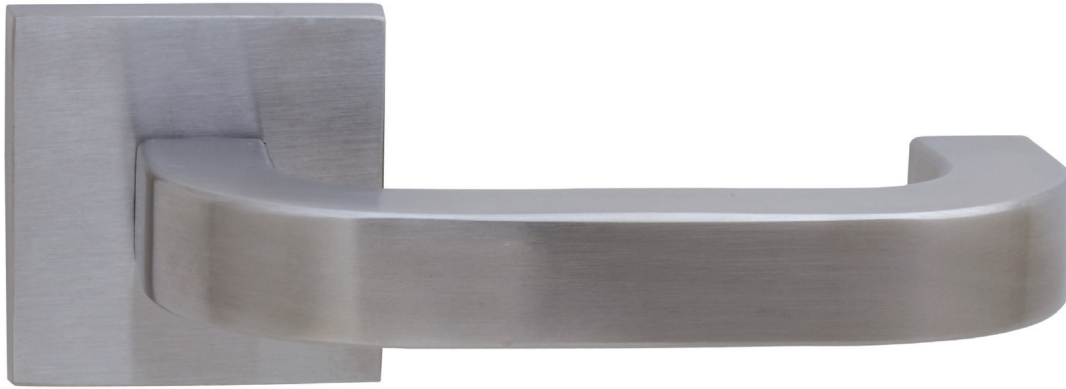




# 6230 | Tau



Lever returns to within 1/2" of door face

Shown in Satin Stainless finish

### Standard rose system

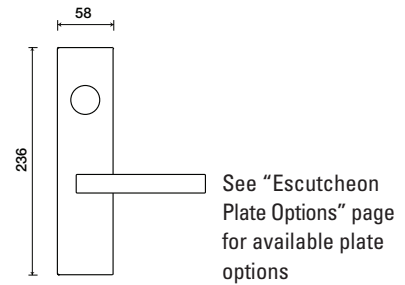
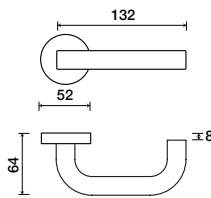
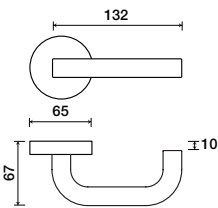
Lever with 65 mm square rose for standard tubular 2-1/8" door prep

### Small rose system

Lever with 52 mm rose for mortise and custom tubular door prep

### Escutcheon plate system

Lever with plate for mortise functions



See "Rose Options" page for available rose options

See "Escutcheon Plate Options" page for available plate options

### Tubular leversets ordering example:

Tau lever on a standard rose, passage function, in satin satin finish with 2-3/4" backset

6230	1912-Q	PA	629	2-3/4	
Lever design	Rose/Plate	Function	Finish	Backset	Misc.
Tau 6230	SMQ (54 mm) SMQR (54 mm) SM (52 mm) 1912-Q (65 mm) 1912 (65 mm)	PA (Passage) PY (Privacy) FD (Full Dummy) SD (Single Dummy)	Per project specification	2-3/8" 2-3/4"	