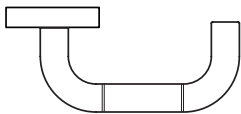


5752 | Ellise



Lever returns to within 1/2" of door face

Shown in Satin Stainless finish

Standard rose system

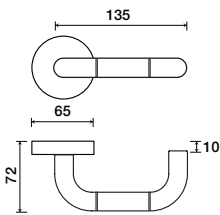
Lever with 65 mm square rose for standard tubular 2-1/8" door prep

Small rose system

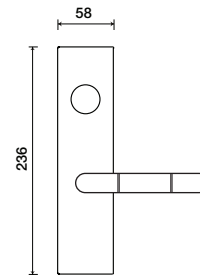
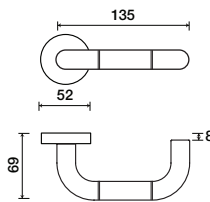
Lever with 52 mm rose for mortise and custom tubular door prep

Escutcheon plate system

Lever with plate for mortise functions



See "Rose Options" page for available rose options



See "Escutcheon Plate Options" page for available plate options

Tubular leversets ordering example:

Ellise lever on a standard rose, passage function, in satin stainless finish with 2-3/4" backset

5752	1912	PA	630	2-3/4	
Lever design	Rose/Plate	Function	Finish	Backset	Misc.
Ellise 5752	1912 (65 mm) SM (52 mm)	PA (Passage) PY (Privacy) FD (Full Dummy) SD (Single Dummy)	Per project specification	2-3/8" 2-3/4"	