

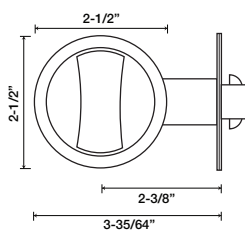
## PD800 Series Pocket Sliding Door Privacy Lock

### Features:

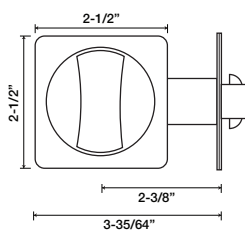
- ▶ Pocket door applications
- ▶ Fits ANSI 160 door prep
- ▶ Accommodates 1-3/8" to 1-3/4" doors

### Available Finishes:

- 626 - Satin Chrome
- 625 - Satin Chrome
- 622 - Matte Black
- 613 - Dark Bronze
- 606 - Satin Brass



**PD822 Round**



**PD823 Square**

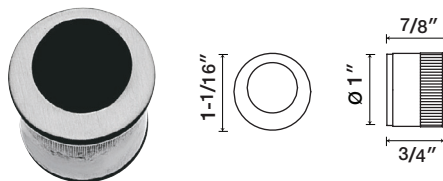
### PD800 Series Specifications

Application	For pocket doors in a multi-family environment
Material	Zinc alloy
Backset	2-3/8" (60mm)
Door Thickness Range	1-3/8" (35mm) to 1-3/4" (45mm); thick door parts kit available

Options: Round finger pull

### RFP

Round finger pull



### How to Order:

Series	Option	Finish
PD822	RFP	626