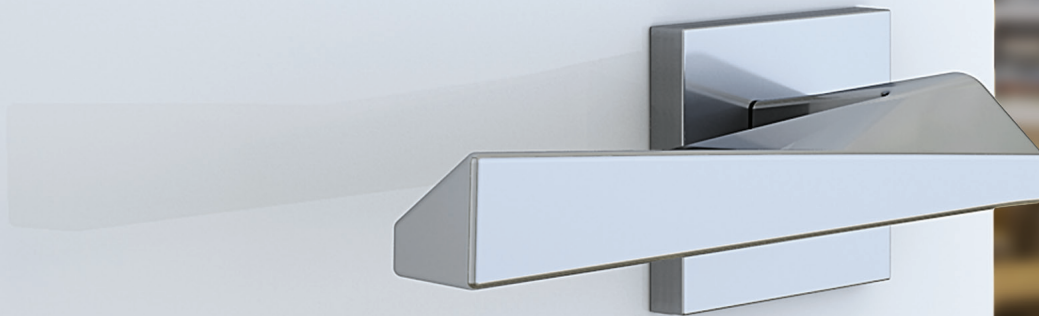


T600 Series

Tubular Latchsets

Beautiful world class designs and proven performance, ideal for your residential or hospitality project.



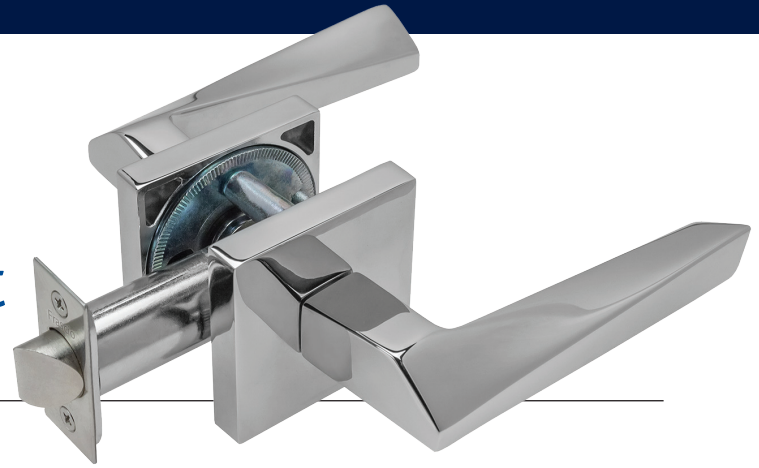
A valued brand of



www.FRInternational.com

T600 Tubular Latchset

for 2-1/8" Bored-Hole Application



Frascio's T600 latchset is designed for maximum reliability, use with standard door prep, and easy time-saving installation — a proven favorite of designers everywhere.

T600 Series Rose Options — Fully interchangeable within the T600 Series



1903 Contemporary



1905 Traditional



1912 Smooth



1906 Ellipse

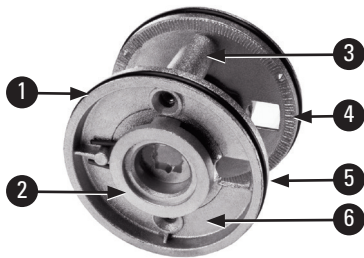


1912Q Square

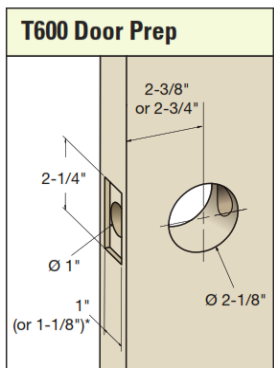


1912QE Square Extended

Superior features and benefits of our T600 interlocking backplate



- 1 **Cast-in latch stabilizing legs** connect with latch body to provide stability
- 2 **Solid spring-loaded hubs** provide excellent lever support
- 3 **Interlocking legs** allow easy self-guiding throughbolt installation
- 4 **Cast in grip texture** provides tight surface grip and resists rotation
- 5 **Durable rubber o-ring** attaches securely to large format roses
- 6 **Solid cast body** provides sturdy mounting for roses



Dimensions are approximate and for reference only. Please refer to Frascio template.





T600 Specifications	
Application	Residential and hospitality interior doors requiring passage, privacy, communicating, and dummy trim functions
Material	Brass, stainless steel, and die cast zinc levers and roses. Latch faceplates and strikes stainless steel
Backset	2-3/8" (60mm) and 2-3/4" (70mm)
Handing	Non-handed trim set. Latchbolt handing and bevel is field reversible
Door Thickness Range	1-3/8" (35mm) to 2" (51mm); thick door parts kit available
Door Preparation	2-1/8" Bored Hole — refer to door prep template for specifics. ANSI 160 or ANSI 161
Faceplate	1" x 2-1/4" square corner standard; 1-1/8" wide option available
Strike	1-1/8" x 2-3/4" T Strike with 1-1/8" lip standard; Full Lip Strike, 1/4" Radius Full Lip Strike and ASA Strike options available

Complies with ANSI Grade 2 cycle requirements

T600 Function Chart

Function Code Number	Illustration Outside ◀ ▶ Inside	Function/Description	ANSI Number
PA		Passage Latchbolt retracted by lever from either side at all times	F75
PY		Privacy Latchbolt retracted by lever from either side, unless outside is locked by inside pushbutton. Turning inside lever or closing door unlocks outside lever. To unlock from outside, insert emergency tool into privacy access hole in rose.	F76A
CPABP		Communicating Passage for Blind Prep (no plate) Latchbolt retracted by inside lever. No trim or cover plate on outside.	F111
CPACP		Communicating Passage with Cover Plate Latchbolt retracted by inside lever. Blank cover plate on outside.	F111
SD (SD-TB)		Single Dummy Surface mounted Single Dummy Through bolt mounted to back side	
FD (FD-TB)		Full Dummy Surface mounted Full Dummy Through bolt mounted	

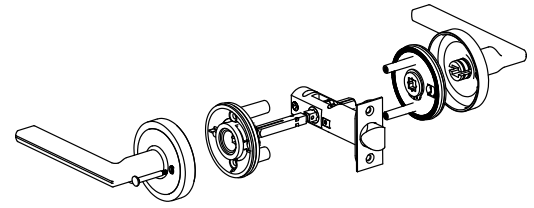
T600 tubular leverset ordering example:

Sweep lever on a 1912Q standard square rose, passage function, in polished chrome finish, 2-3/4" backset

720	1912Q	PA	625	2-3/4	1SC	TSTK1	
Lever design	Rose/Plate	Function	Finish	Backset	Latch	Strike	Misc.
Sweep 720	1912 (65 mm) 1903 (65 mm) 1905 (65 mm) 1912Q (65 mm) 1912-76 (76 mm)	PA (Passage) PY (Privacy) FD (Full Dummy) SD (Single Dummy)	Per project specification	2-3/8" 2-3/4"	1SC Standard Commercial Latch (L701)	TSTK1 Standard T-Strike	

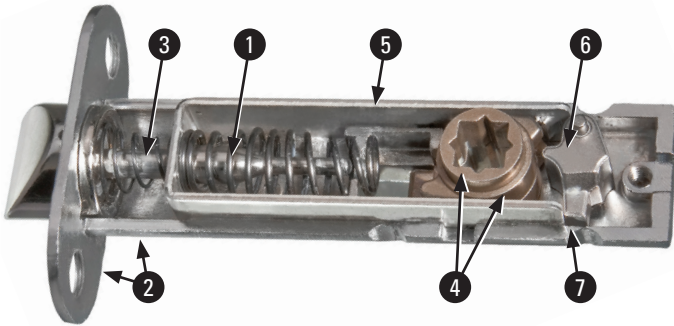
Latch and Strike Options

Frascio offers a variety of tubular latch and strike options, available for use on both the T600 Series standard bore and T700 Series small bore latchsets.



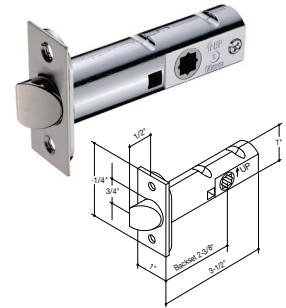
Standard Frascio passage and privacy spring latches

- Durable cast latch housing
- Solid brass latch bolt
- Non-handed
- Exceed cycle test requirements for Grade 2 certification
- Available in 2-3/8" (60mm) and 2-3/4" (70mm) backsets

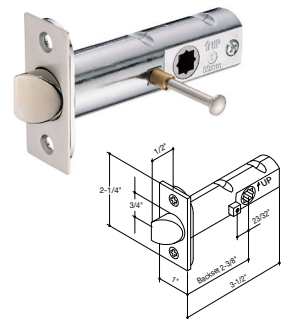


- 1 Heavy-duty springs** provide robust strength and prevent lever sag
- 2 1-piece cast latch case and mounting flange** provides superior strength, stability, and durability
- 3 Stainless steel plunger** shoulder rod cannot come disengaged from retractor
- 4 Separate stainless steel lever hubs** allows independent operation of interior and exterior sides
- 5 Stainless steel retractor** ensures smooth, reliable operation
- 6 Stainless steel cam follower** creates positive stop for retractor and hubs
- 7 Integrated interlocking design** casting design connects with Frascio Interlocking Backplate to provide exceptional stability and resistance to operating torque

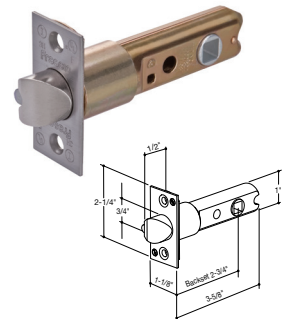
L601 Passage Latch
(L601 2-3/8"; L701 2-3/4")



L602 Privacy Latch
(L602 2-3/8"; L702 2-3/4")



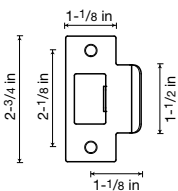
Also available:
UL701 UL-Rated Latch
(2-3/4")



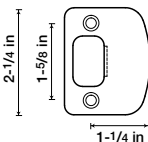
Line art dimensions are approximate and for reference purposes only.

Strike options

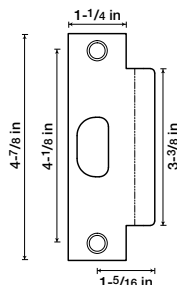
TSTK1
T-Strike (standard)*



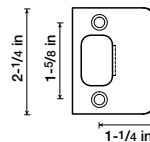
TSTK2
Full Lip, 1/4" Radius
Corner Strike



TSTK3
ANSI Prep Strike



TSTK4
Full Lip Square Corner
Strike



*Latches are automatically provided with TSTK1 T-strike and strike box, unless otherwise specified.

FR International also offers a residential-grade tubular latch (not shown here) that meets performance needs for most residential applications.

Lever Design Options

Choose from hundreds of high-end decorative lever designs engineered using the highest quality materials and crafted with careful attention to detail.

Many more designs are available in our product catalog at www.FRIInternational.com.



110 Apollo



146 Star



200 Easy



220 Alpha



230 Beta



250 Butterfly



260 Cosmos



270 Metro



280 Straight



300 Laguna



380 Julius



400 Soft



401 Soft Plus



620 Tuke



630 Eidos



639 Theta



640 Kuma



650 Kalé



700 Flow



710 Aria



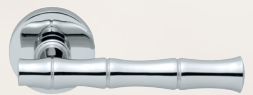
720 Sweep



744 Sigma



745 Modulo L



785 Bambu



813 Verano



823 Saló



900 Stella



903 Trevi



937 Corina



939 Allegra



1023 Ursa



1200 Bump



1210 Filoo



1220 Anatra



1270 Drop



1290 Form



1320 Decima



1330 Seppia



1520 Leaf



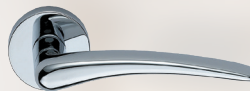
1540 Chill



1550 Chill+



1580 Rise



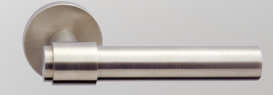
2250 Halley



5000 Alessia



5013 Urbano



5019 Band



5100 Lucia



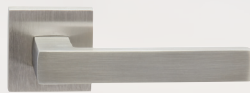
5130 Delta



5150 Gamma



5200 Loft



5219 Misano



5300 Omega



5350 Raffaella



5550 Laura



5650 Gabriella



5700 Loredana



5702 Stefano



5750 Adina



5752 Ellise



5800 Antonella



5804 Maretto



5810 Sigma



5820 Forino



5850 Christina



5855 Sophia



6118 Lorenzo



6202 Decora



6208 Esago



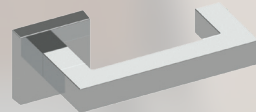
6210 Base



6215 Valenza



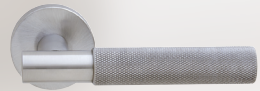
6218 Simpla



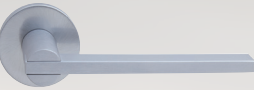
6220 Kappa



6280 Vienna



6587 Tacta



6592 Cutlass



6594 Modulo B



6605 Textura



6612 Marco



6774 Scala



6716 Arno

View more lever designs in our product catalog at www.FRIInternational.com

Responsive Creativity

Unlimited Possibilities

Your creativity can take shape in a variety of different forms, ranging from design modifications for our existing products, to all new designs for levers, roses, escutcheons, or pulls.

If you can imagine it, our talented design team can figure out how to engineer and produce it. We use 3D CAD technology to bring your ideas to life.



Deliver something remarkable without creative compromise?

If you're looking for something out of the ordinary for your project, getting started has never been easier. You have our commitment to make the process seamless and satisfying. Of all the tasks you and your team have to manage, searching for someone to develop the design solution you need shouldn't be one.

How can we be of assistance?



Fracio offers rapid 3D prototyping to create physical samples for a touch-and-feel review.

FR International, LLC
1011 3rd Avenue S.W.
Carmel, Indiana USA 46032
Tel: (317) 663-0030
Fax: (317) 663-0029
Toll Free: 1-800-238-9711
www.FRInternational.com

