

SLT600 Sliding Door Latchset

The Frascio SLT600 is a perfect solution for sliding door application where a passage or privacy set is required. These tubular latchsets fit a standard ANSI 160 prep and are available with many lever options. The SLT600 is an ideal solution for projects where high design and quality are important.

Features:

- ▶ Sliding barn and pocket door applications
- ▶ Complies with ADA requirements
- ▶ Provides automatic latching when door is closed
- ▶ Multiple lever design options
- ▶ Round Rose (1912) or Square Rose (1912Q)
- ▶ Interlocking backplate and robust design
- ▶ 2-3/8" backset, includes pocket door strike
- ▶ Can be installed levers up or levers down

Functions:

SLT600 - PA (Passage)

SLT600 - PY (Privacy)

Available Finishes:

630 - Satin Stainless Steel

629 - Polished Stainless Steel

622 - Matte Black

613 - Dark Bronze

606 - Satin Brass

605 - Polished Brass



How to Order:

Series	Lever	Rose	Finish
SLT600	270	1912	629



220 Alpha



270 Metro



5000 Alessia



5013 Urbano



5019 Band



5100 Lucia



5130 Delta



5150 Gamma



5200 Loft



5700 Loredana



5750 Adina



5800 Antonella



5850 Christina



6118 Lorenzo



6218 Simpla

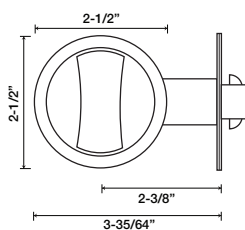
PD800 Series Pocket Sliding Door Privacy Lock

Features:

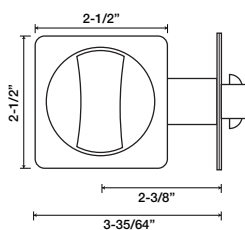
- ▶ Pocket door applications
- ▶ Fits ANSI 160 door prep
- ▶ Accommodates 1-3/8" to 1-3/4" doors

Available Finishes:

- 626 - Satin Chrome
- 625 - Satin Chrome
- 622 - Matte Black
- 613 - Dark Bronze
- 606 - Satin Brass



PD822 Round



PD823 Square

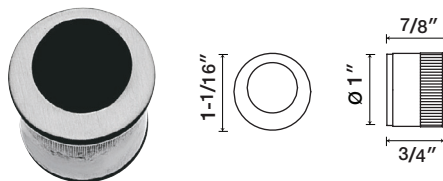
PD800 Series Specifications

Application	For pocket doors in a multi-family environment
Material	Zinc alloy
Backset	2-3/8" (60mm)
Door Thickness Range	1-3/8" (35mm) to 1-3/4" (45mm); thick door parts kit available

Options: Round finger pull

RFP

Round finger pull



How to Order:

Series	Option	Finish
PD822	RFP	626